

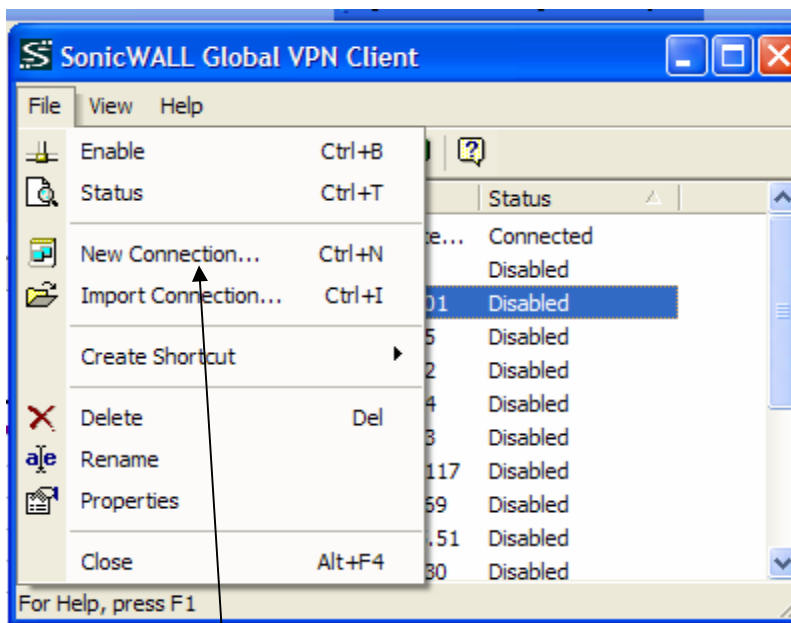
Instructions for remote access to your School

Before you get started you will need:

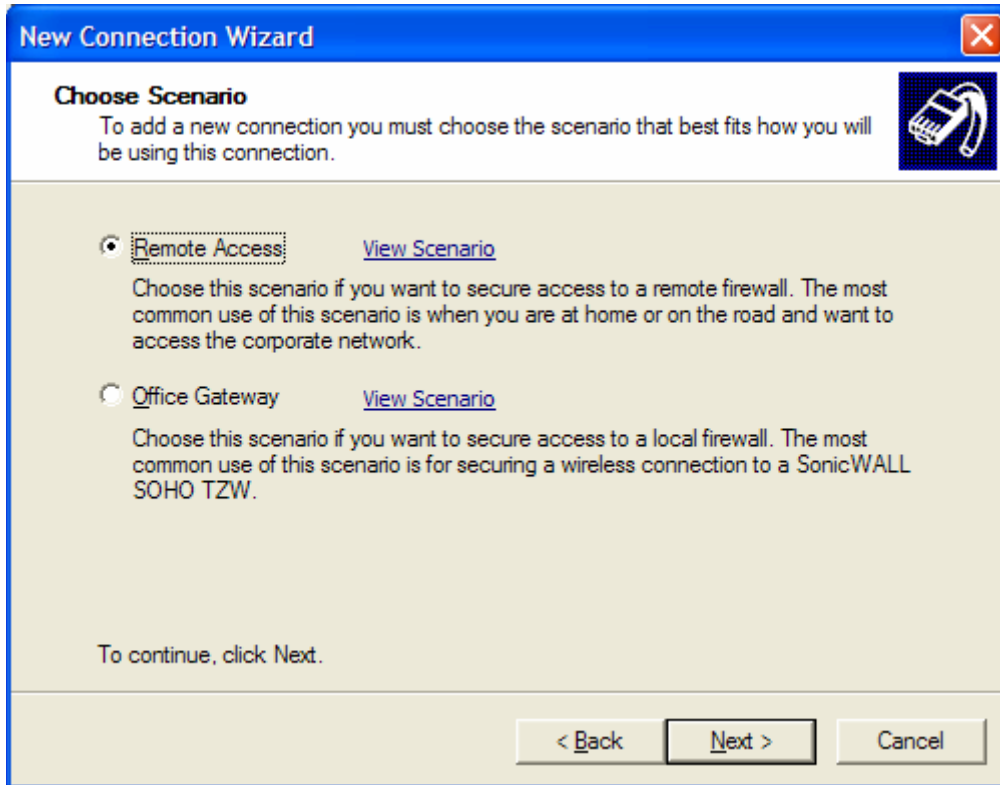
1. Permission from your School Administration.
2. Active and up to date Anti-Virus on your home machine or Laptop.
3. 4 pieces of information from your Administration.
 - a. IP Address of you SonicWALL
 - b. Shared Secret
 - c. VPN User ID
 - d. VPN Password
4. Client Software From <http://www.ppihx.com/GVC2.zip>

Here is where you can click to download the remote access software.

<http://www.ppihx.com/GVC2.zip> Install it with default options and reboot.



Click here to create New Connection and then hit next.



New Connection Wizard

Choose Scenario
To add a new connection you must choose the scenario that best fits how you will be using this connection.

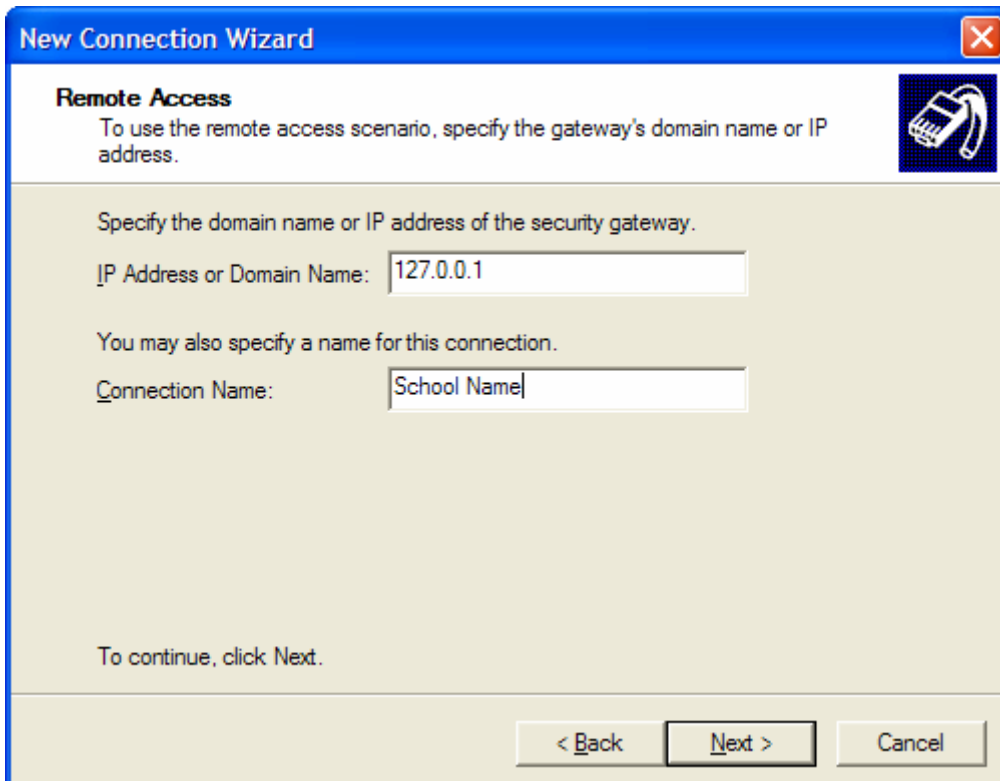
Remote Access [View Scenario](#)
Choose this scenario if you want to secure access to a remote firewall. The most common use of this scenario is when you are at home or on the road and want to access the corporate network.

Office Gateway [View Scenario](#)
Choose this scenario if you want to secure access to a local firewall. The most common use of this scenario is for securing a wireless connection to a SonicWALL SOHO TZW.

To continue, click Next.

< Back Next > Cancel

Make sure Remote Access is selected. Then Hit Next



New Connection Wizard

Remote Access
To use the remote access scenario, specify the gateway's domain name or IP address.

Specify the domain name or IP address of the security gateway.
IP Address or Domain Name:

You may also specify a name for this connection.
Connection Name:

To continue, click Next.

< Back Next > Cancel

Enter the IP address of your School and Enter your School Name

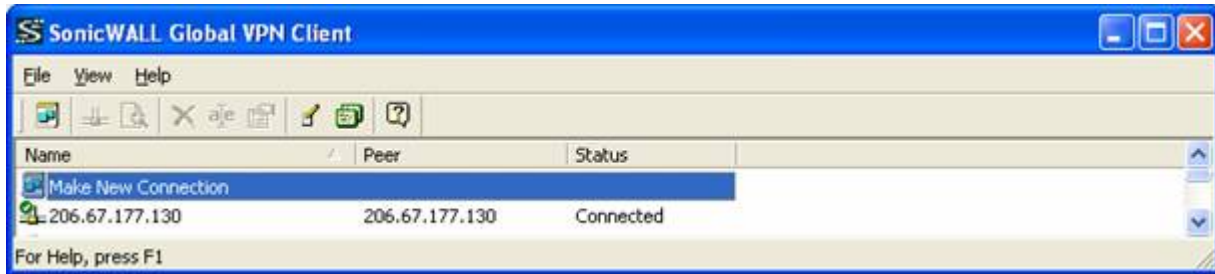


Check both boxes and hit Finish



un-check Unmask and type in the Shared Secret and hit OK

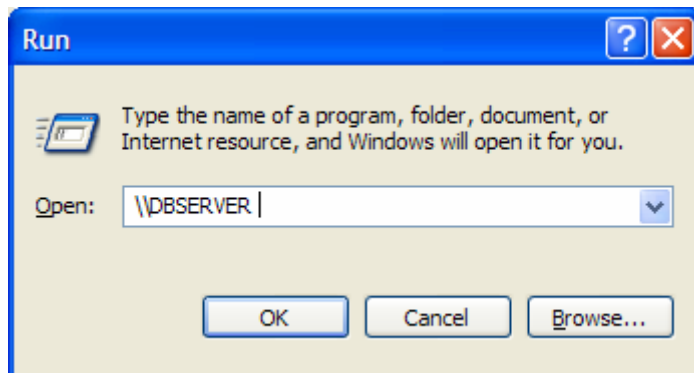
The supply your VPN User ID and VPN Password
Your id is usually you first initial and lastname



When you are connected it should look similar to this, with the green check mark.
If you need to disconnect or reconnect; right click on the connection and select enable or disable.

When you are connected you can map a network drive using the server name or IP address of your server and then you will be asked for your LAN ID and Password.

A quick way to connect to the server is to go to start run and type [\\DBSERVER](#) and press enter.



To connect to your PC at School use VNC by going to your IE 6.01 web browse and type. <http://YourIPAddressorMachineName:5800> Then supply your VNC Password.

Note: To Send CTRL-ATL-DEL press F8 and choose the Send CTRL-ATL-DEL so you can log onto your PC at School.

Remember to make sure the PC you are using at home to access the school is up to date on Service Packs and Virus Scans otherwise you could hurt the Schools computer network.